

Diffuser luminaire - Opal diffuser - direct/indirect distribution

Round luminaire housing made of deep-drawn sheet steel; Housing colour traffic white RAL 9016; Light distribution direct/indirect distribution by means of Opal diffuser of acrylic glass, matt, smooth surface; round, domed acrylic glass diffuser. $65^\circ < 3000 \text{ cd/m}^2$ according to current standard DIN-EN 12464-1, UGR (4H/8H) 20.5. With integrated HF motion sensor. Range 1m - 8m continuously adjustable. Coverage angle of 360° with a coverage area of 160° . Time setting 30 sec - 30 min. and brightness threshold value of 2 to 2000 lx. As master luminaire up to 1000W (ohmic load).. Electrical connection via 3-pole connection terminal with plug-in contacts.. Light Control: netlife easyS9; Regiolux Classification: netlife easy; Control signal: Switch; Number of control gear (max): 4; Communication: Wired; Sensor technology: HF - high frequency; Installation height (min/max): 2m to 4m; Monitoring area: max. D=8m; Optional remote control: 84501101201; Application: Garages, Secondary rooms, Corridors; Function: Motion detection.

CHARACTERISTICS

Order number	25340124110
EAN number	4020863334285
Commodity code	94051140
Certification mark	IP 40, Protection class I, VDU $65^\circ < 3000$, Heat filament test 650°C , F, Indoor, CE
Impact resistance (IK rating)	IK02
Ambient temperatur	ta 25°C
Warranty period	5 years

ELECTRICAL ENGINEERING

Controller	Electronic driver + motion sensor S9 (1 pcs.)
System output	18W
Mains voltage	230V/50Hz
Energy efficiency class/light source	D

LIGHTING TECHNOLOGY

Placement	LED, Colour rendering/Light colour CRI ≥ 80 / 3000K
Colour tolerance (MacAdam)	3SDCM
Nominal luminous flux	2143lm
LED service life	50000h L80/B10 (Tq 25°C)
Luminaire luminous efficiency	116lm/W
UGR lat./long.	20.5 / 20.5

MECHANICS

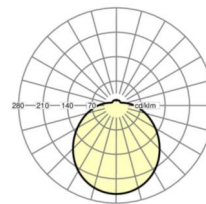
Housing colour	traffic white RAL 9016
Dimensions (LxWxH/DxH)	373mm x 125mm
Weight (net)	1.6kg
Cable entry KE	See mounting instructions
Type of installation	Ceiling-mounted single installation, Wall mounting

Dimensions

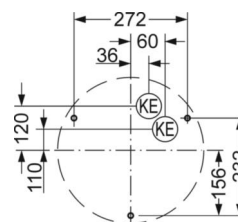
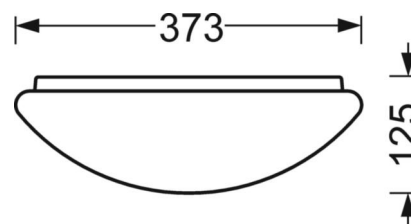
H	125 mm	Height
D	373 mm	Diameter
A1	272 mm	Mounting distance single mounting
A1 alternativ	232 mm	Mounting distance single mounting (alternatively)

DEEP-LINK

<https://www.regiolux.de/en/article/25340124110>



Reference	LED 2100lm 830
η_{LB}	100 %
$\Phi_{\downarrow/\uparrow}$	86 % / 14 %
UGR lat./long.	20.5 / 20.5
VDU	$65^\circ < 3000\text{cd/m}^2$



LC SYSTEM

CHARACTERISTICS

Regiolux Classification	netlife easy
Control signal	Switch
Number of control gear (max)	4
Communication	Wired
Sensor technology	HF - high frequency
Installation height (min/max)	2m to 4m
Optional remote control	84501101201
Application	Garages, Secondary rooms, Corridors
Function	Motion detection

